

# Technical Manual



# JBL CBT 200LA/WH/-1

## SPECIFICATIONS

### ACOUSTIC & ELECTRICAL SPECIFICATIONS:

- Nominal Impedance: 4 Ohms (in Thru Mode)
- Power Capacity: 650W (2600W Peak), 2 hrs
- (8 OHM SETTING): 400W (1600W Peak), 100 hrs
- Frequency Range: 80 Hz – 20 kHz (–10 dB)
- Maximum SPL:
  - Narrow: (speech mode): 123 dB cont ave (129 peak)
  - (music mode) 120 dB cont ave (126 peak)
  - Broad: (speech mode): 121 dB cont ave (127 peak)
  - (music mode) 118 dB cont ave (124 peak)
- Sensitivity: (2.83V @ 1 meter)
  - Narrow: (speech mode): 95 dB (2kHz-5kHz)
  - (music mode) 92 dB (150Hz-18kHz)
  - Broad: (speech mode): 93 dB (2kHz-5kHz)
  - (music mode) 90 dB (150Hz-18kHz)

### SYSTEM COMPONENTS:

- Cabinet: Enclosure (Not For Sale)
- Grille: 442866-001, 442866-002 (WH)
- Components/Driver: Sixteen 50 mm (2 in) Full-Range Per Module
- D.C. Resistance: 10.0 ohms
- Crossover Network: 5020399 (Main PCB)

### AURAL SWEEP TEST SPECIFICATIONS:

- A. System Aural Sweep Test: 5.0 V Input, 50 Hz Ito 16 Sweep duration: 4 seconds

### PHYSICAL SPECIFICATIONS:

- Enclosure Dimensions: 2000 x 98.5 x 153 mm D (78.8 x 3.8 x 6.0 in.D)
- Net Weight: 33 lb (14.6 kg)

### WARRANTY INFORMATION:

- Refer to Warranty Statement packed with each product.

## PACKAGE

Warranty  
59660

Specification Sheet  
1000076807

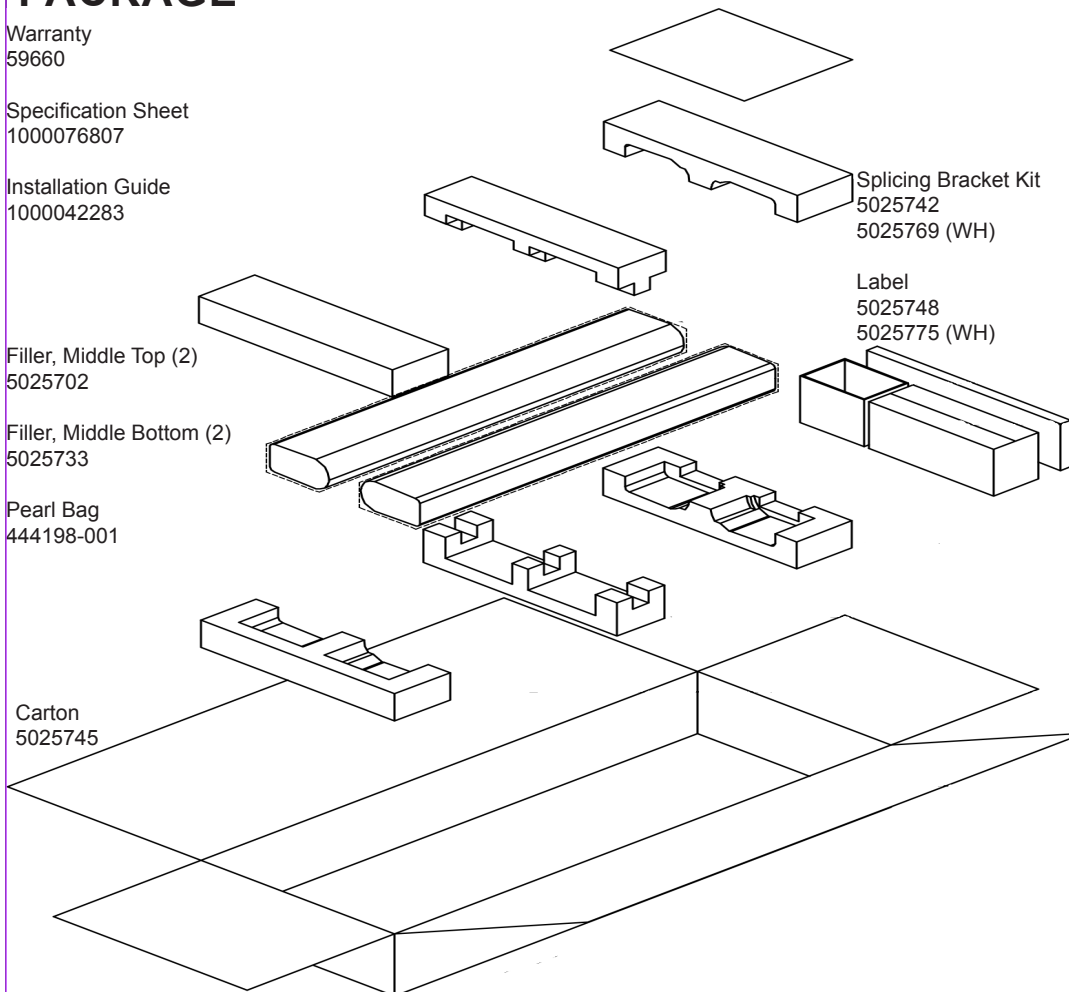
Installation Guide  
1000042283

Filler, Middle Top (2)  
5025702

Filler, Middle Bottom (2)  
5025733

Pearl Bag  
444198-001

Carton  
5025745



Speaker Bracket Kit:

5025739  
5025766 (WH)

Each Kit Includes:

Bracket  
Speaker/Wall  
445765-001  
445765-002 (WH)

Splicing Bracket Kit  
5025742  
5025769 (WH)

Label  
5025748  
5025775 (WH)

Bolts (6)  
442814-001  
442814-002 (WH)  
M6-16MM

Washers, SS Lock (6)  
444191-001  
444191-002 (WH)

Washers, Flat SS (6)  
444190-001  
444190-002 (WH)

Switch Cover (6)  
444192-001  
444192-002 (WH)

Bolts (2)  
444478-001  
444478-002 (WH)

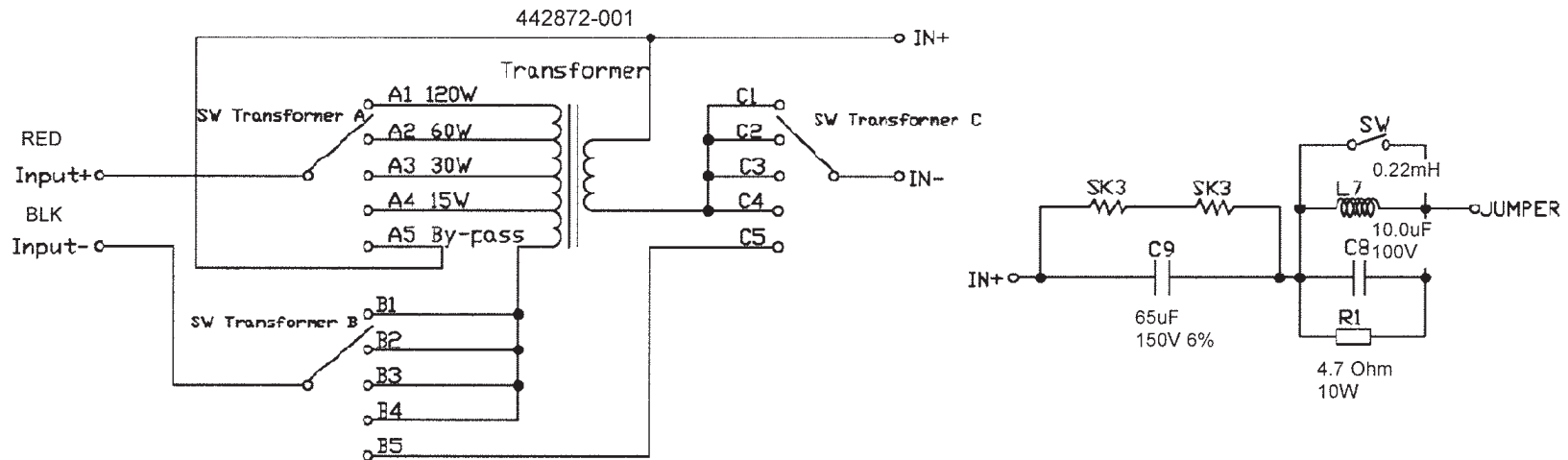
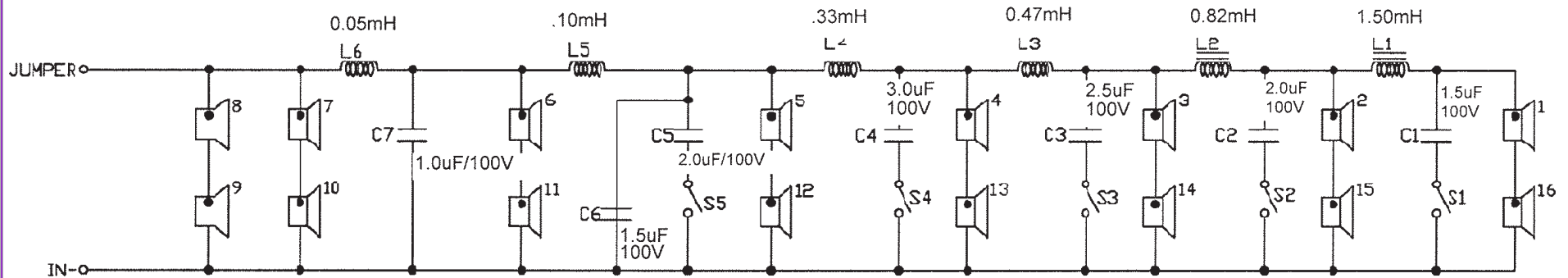
Nuts (2)  
444479-001  
444479-002 (WH)

JBL CBT 200LA/WH/-1 REV B

# JBL CBT 200LA/WH/-1

## SCHEMATIC 5020399

70V/100V Transformer Taps: 120W, 60W, 30W, (15W at 70V only) and 8 ohms thru via switch (with top and bottom set to same): 240W, 120W, 60W (30W at 70V only) and direct 4 ohm max.



Individual Parts for the above crossover are not available.  
A complete replacement assembly should be ordered.

# JBL CBT 200LA/WH/-1

## COMPONENT EXPLODED VIEW (1 COMPLETE UNIT = 2 X EVERYTHING BELOW)

