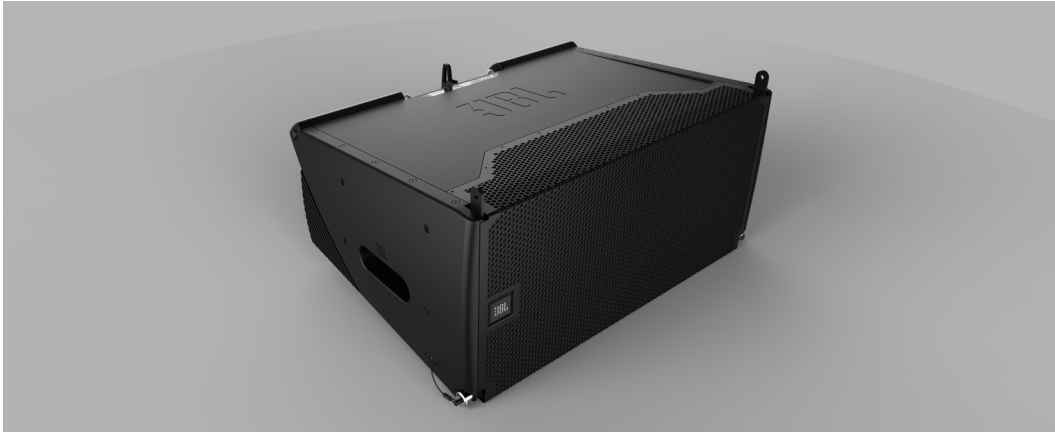


## DUAL 10-INCH POWERED LINE ARRAY LOUDSPEAKER



### Spare Parts List

Ref ID	P/N	Description	Torque		QTY.
			LBS-IN	NM	
	JBL-P3234MX	SRX910LA			
	JBL-P3247MXCN	SRX910LA FOR CHINA			
1	5123822-00	ENCL,CHAS,CABINET,SRX 910LA			1
2	5123868-00	HDW, BRKT,Side PNL,SRX 910LA			4
-	5139039-00	HDW,ASY,PORT-BAFFLE,SRX 910 LA for CS			2
3		HDW,FOAM,Port L,SRX 910LA			1
4		ENCL,Port tube,SRX 910LA			1
5		HDW,FOAM,Port Rear,SRX 910LA			1
7		HDW,FOAM,WAVEFORMER,SRX 910LA			1
8		ENCL,Baffle,SRX 910LA			1
9		HDW,FOAM,Grill L,SRX 910LA			1
44		HDW,FOAM,Port R,SRX 910LA			1
45		HDW,FOAM,Grill R,SRX 910LA			1
10		5120067-00X	M/I, 261G-1 FOR CS		
-	5136328-00	CONE KIT, 261G-1			
11	5126754-00	HDW,FOAM,WOOFER,SRX 910LA			4
12	5056661	LOGO SRX800, EON615			1
13	5140078-00	SPKRSYS, GRL, ASY, w/Logo,SRX910LA			1
15	5123832-00	HDW,RIG,FRONT UNIT,SRX 910LA			2
16	5126750-00	HDW, BRKT,rigging fix plate,SRX 910LA			2
17	5123053-00	MECHASY,AMP,SRX900,FULL RANGE			1
	5047669	HDW,KNOB,ENCODER,RND,22.9MM HT,D SHAFT MT,SOFT TOUCH			1
18	5123934-00	HDW,HDL,REAR HANDLE RIGHT,SRX 910LA			1
19	5123936-00	HDW,HDL,REAR HANDLE LEFT,SRX 910LA			1
20	5122183-00X	M/I, 2432H-3 FOR CS			1
-	D8R2432	DIAPHRAGM KIT 2432			

## DUAL 10-INCH POWERED LINE ARRAY LOUDSPEAKER

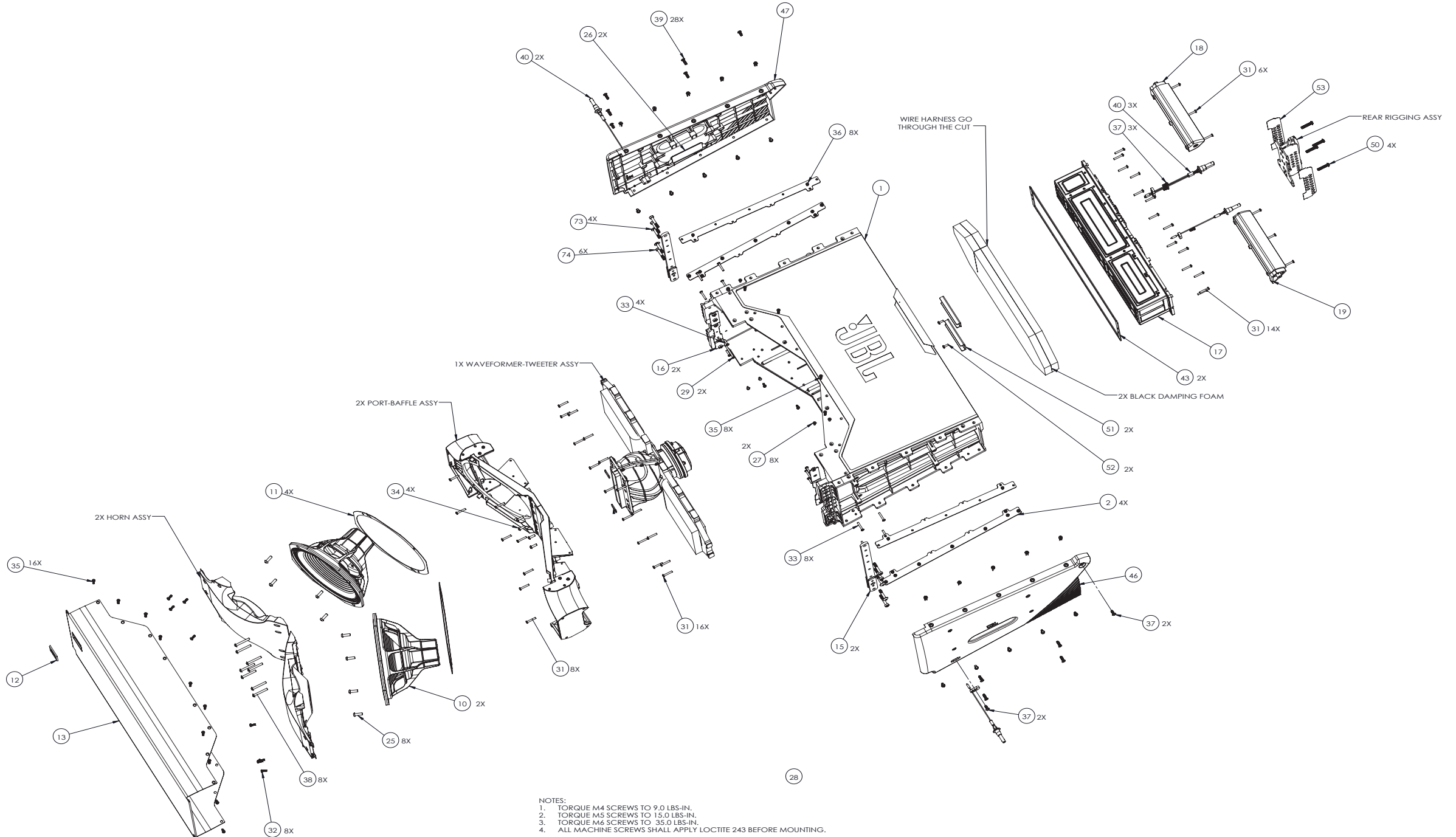
Spare Parts List					
Ref ID	P/N	Description	Torque		QTY.
			LBS-IN	NM	
21	5125861-00	HDW,BRKT,WG MOUNTING PLATE,SRX 906LA			1
-		HDW,ASY,RIG,Rear,SRX 910 LA for CS			1
24		HDW,RIG,REAR BASE,SRX 910LA			1
69	5138712-00	HDW,RIG,MOVING BOARD,SRX 910LA			1
70		HDW,RETAINER RING,111x116			1
71		HDW,PIN,GROOVED,116x18.5			1
25	-	FSTNR,MSCR,TORX,BTNHD,M6x20,T30,BLK,NY	35	3.954	8
26	5124232-00	HDW,FOAM,HANDLE PAD,SRX 906LA			2
27	-	FSTNR,MSCR,TORX,FLH,4x16,BLK	9	1.017	8
28	5123064-00	HDW,CBL,WA,10LA SPEAKER WIRE HARNESS			1
29	-	SCR,PT,M4x40mm PAN HD, TORX DRIVE BLK MAGN1577	9	1.017	2
30	-	FSTNR,MSCR,TORX,BTNHD,M5x30,T25,BLK,NY	15	1.695	6
31	-	FSTNR,MSCR,TORX,PANH,4x25,T20,BLK	9	1.017	58
32	-	FSTNR,MSCR,TORX,PH,M4x12,NYLOCK	9	1.017	18
33	-	FSTNR,MSCR,TORX,PANH,4x16,T20,BLK	9	1.017	12
34	-	FSTNR,MSCR,TORX,BTNHD,M5x16,T25,BLK,NY	15	1.695	4
35	-	FSTNR,MSCR,FLH,TORX,M4x20,BKZN,STL,NYLCK	9	1.017	24
36	-	FSTNR,MSCR,TORX,FLH,M4x12,T20,BLK,NY	9	1.017	12
37	-	FSTNR,MSCR,TORX,BTNHD,M5x12,T25,BLK,NY	15	1.695	7
38	-	FSTNR,MSCR,TORX,BTNHD,M5x40,T25,BLK,NY	15	1.695	8
39	-	FSTNR,MSCR,THIN_HEAD,SCH,M5x16,BK,NY	15	1.695	28
40	-	FSTNR QLK M8 X16MM QRP			5
42	-	FSTNR,PIN,LATCH,3x12,BKZNC,IRON			4
43	5124223-00	HDW,SEAL,AMP PANEL GASKET,SRX 906LA			2
46	5134723-00	MECHASY,ENCL,LEFT PANEL UINT,SRX 910LA			1
47	5134724-00	MECHASY,ENCL,RIGHT PANEL UINT,SRX 910LA			1
49	-	SCR,1/4-20 x 1, FLAT 100, PH, BLK ZINC	30	3.389	4
50	-	FSTNR,MSCR,TORX,PANH,M6430,T30,BLK,NY	35	3.954	4
51	5123862-00	HDW, BRKT,rear rigging fix plate,SRX 910			2
52	-	SCR,PT,M4x12MM,PAN HEAD,TORX,BLK	9	1.017	2
53	5134601-00	LBL,PRINT,SRX910LA RIGGING			1
57	5323416	CON,CBL,PowerCON TRUE1 TOP,FEMALE			1
58	5343418	CON,CBL,PowerCON TRUE1 TOP,MALE			1

## DUAL 10-INCH POWERED LINE ARRAY LOUDSPEAKER

Spare Parts List					
Ref ID	P/N	Description	Torque		QTY.
			LBS-IN	NM	
-	5139041-00	HDW,ASY,HORN,SRX 910 LA for CS			2
60		ENCL,HORN,PANEL,SRX 910LA			2
61		ENCL,HORN,PHASE PLUG, SRX, 910LA			1
62		HDW,FOAM,Horn-1,SRX 910LA			1
63		HDW,FOAM,Horn-2,SRX 910LA			1
64		HDW,FOAM,Horn-3,SRX 910LA			1
-		5139040-00	HDW,ASY,WAVEFORMER,SRX 910 LA for CS		
65	ENCL,WG,SIDE COVER,SRX 910LA				2
66	ENCL,WG,PHASE PLUG,SRX 910LA				2
67	HDW,BRKT,WAVEGUIDE PLATE,SRX 910LA				2
68	-	FSTNR,MSCR,TORX,FLH,4x12,T20,BLK	9	1.017	12
72	-	T-NUT, M5 x PO.5, EON518S	15	1.695	6
73	-	FSTNR,MSCR,TORX,BTNHD,M6x30,T25,BLK,NY	35	3.954	4
74	-	FSTNR,MSCR,TORX,SCH,M6x33,T30,BLK,NY	35	3.954	6

# SRX910LA

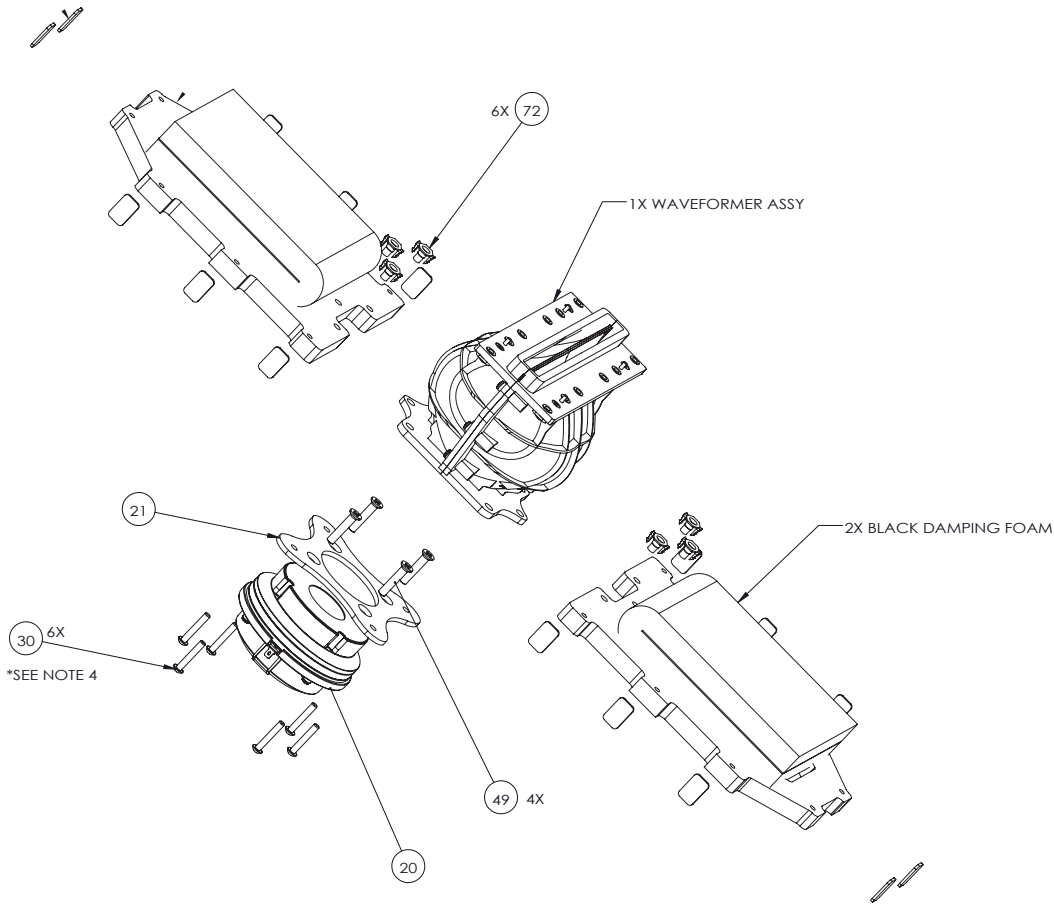
## DUAL 10-INCH POWERED LINE ARRAY LOUDSPEAKER



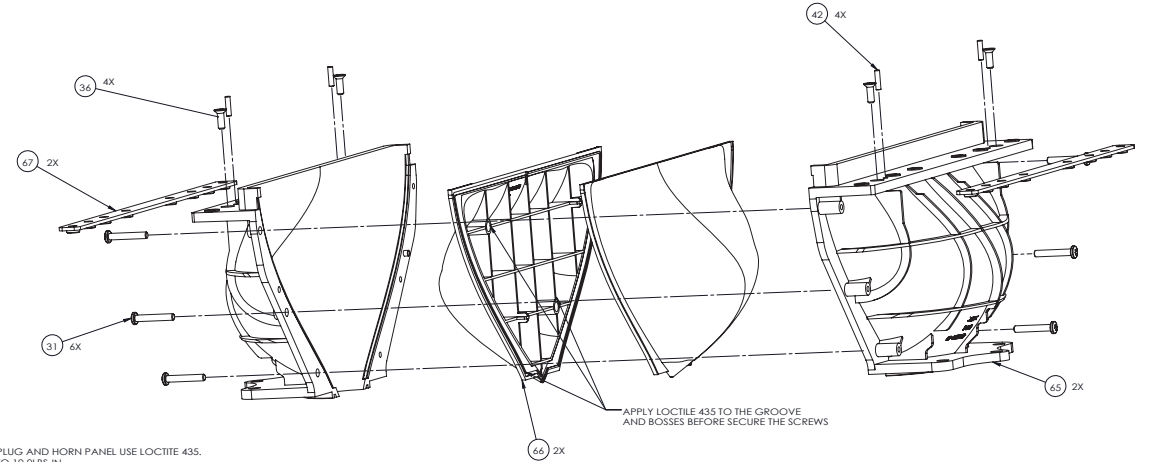
- NOTES:
1. TORQUE M4 SCREWS TO 9.0 LBS-IN.
  2. TORQUE M5 SCREWS TO 15.0 LBS-IN.
  3. TORQUE M6 SCREWS TO 35.0 LBS-IN.
  4. ALL MACHINE SCREWS SHALL APPLY LOCTITE 243 BEFORE MOUNTING.

# SRX910LA

## DUAL 10-INCH POWERED LINE ARRAY LOUDSPEAKER



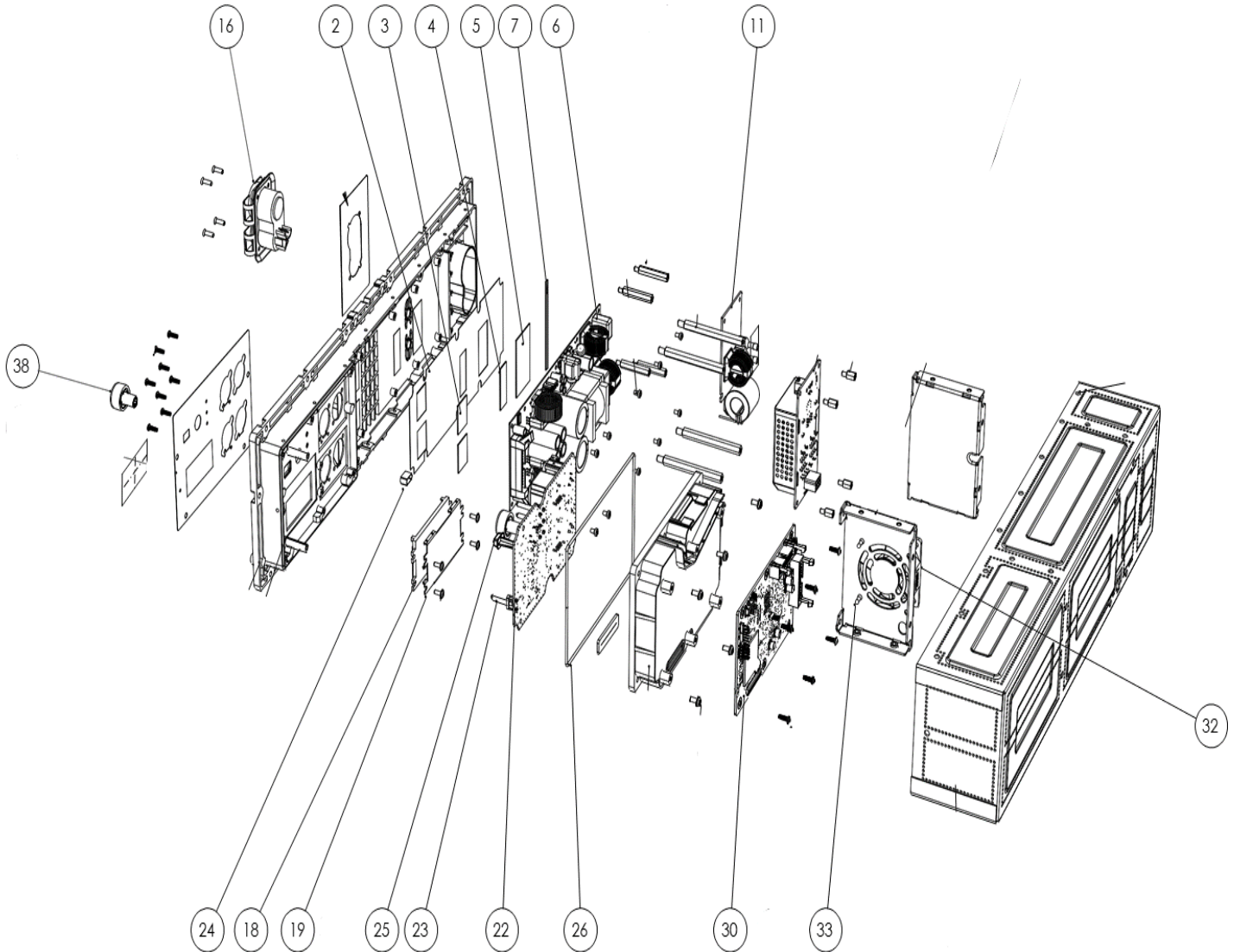
- NOTES:
1. TORQUE M4 SCREW TO 9.0 LBS-IN.
  2. TORQUE M5 SCREW TO 15.0 LBS-IN.
  3. TORQUE SCR, 1/4-20 TO 30.0 LBS-IN.
  4. DO NOT SECURE THE 6 SCREWS FIRMLY, LET THE WOOD CAN ADJUST A LITTLE. SECURE THE SCREWS AFTER THE ASSEMBLY BEING INSTALLED IN THE CABINET.



- NOTES:
1. FIRST GLUE HORN PHASE PLUG AND HORN PANEL USE LOCTITE 435.
  2. TORQUE SCREW PT 4X25 TO 10.0LBS-IN.
  3. TORQUE M4 SCREW TO 10.0LBS-IN.
  4. ALL MACHINE SCREWS SHALL APPLY LOCTITE 243 BEFORE MOUNTING.
  5. ALL OUTER APPEARANCE SURFACE SHOULD CLEAN THE GLUE OVERFLOW.
  6. NO DUST, DAMAGE FOR BOTH INSIDE AND OUTSIDE OF WAVEFORMER ENCLOSURE.

## 10 Inch 2-Way Loudspeaker System

### AMP Module



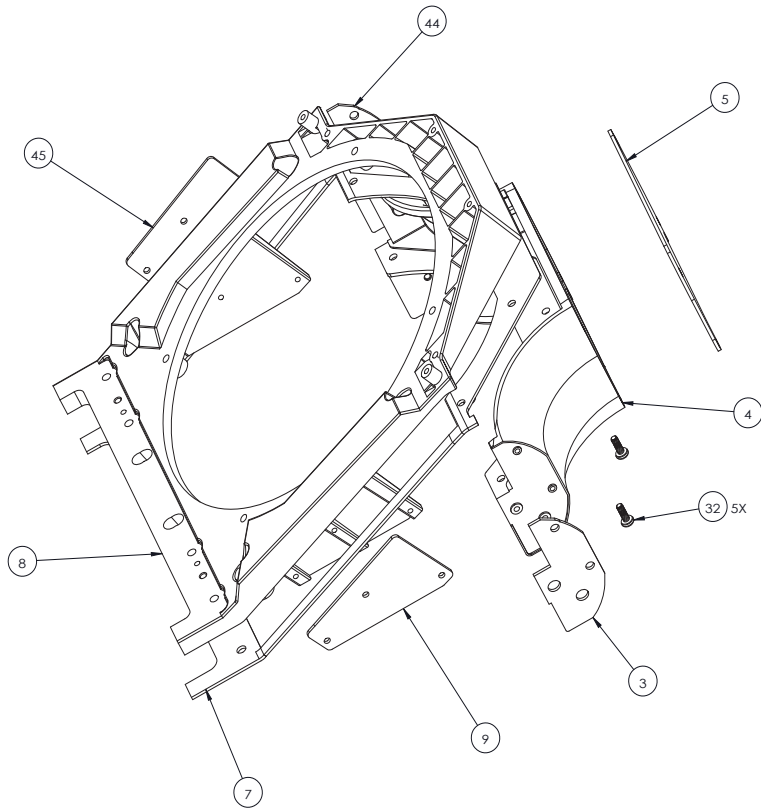
## 10 Inch 2-Way Loudspeaker System

### Spare Parts List

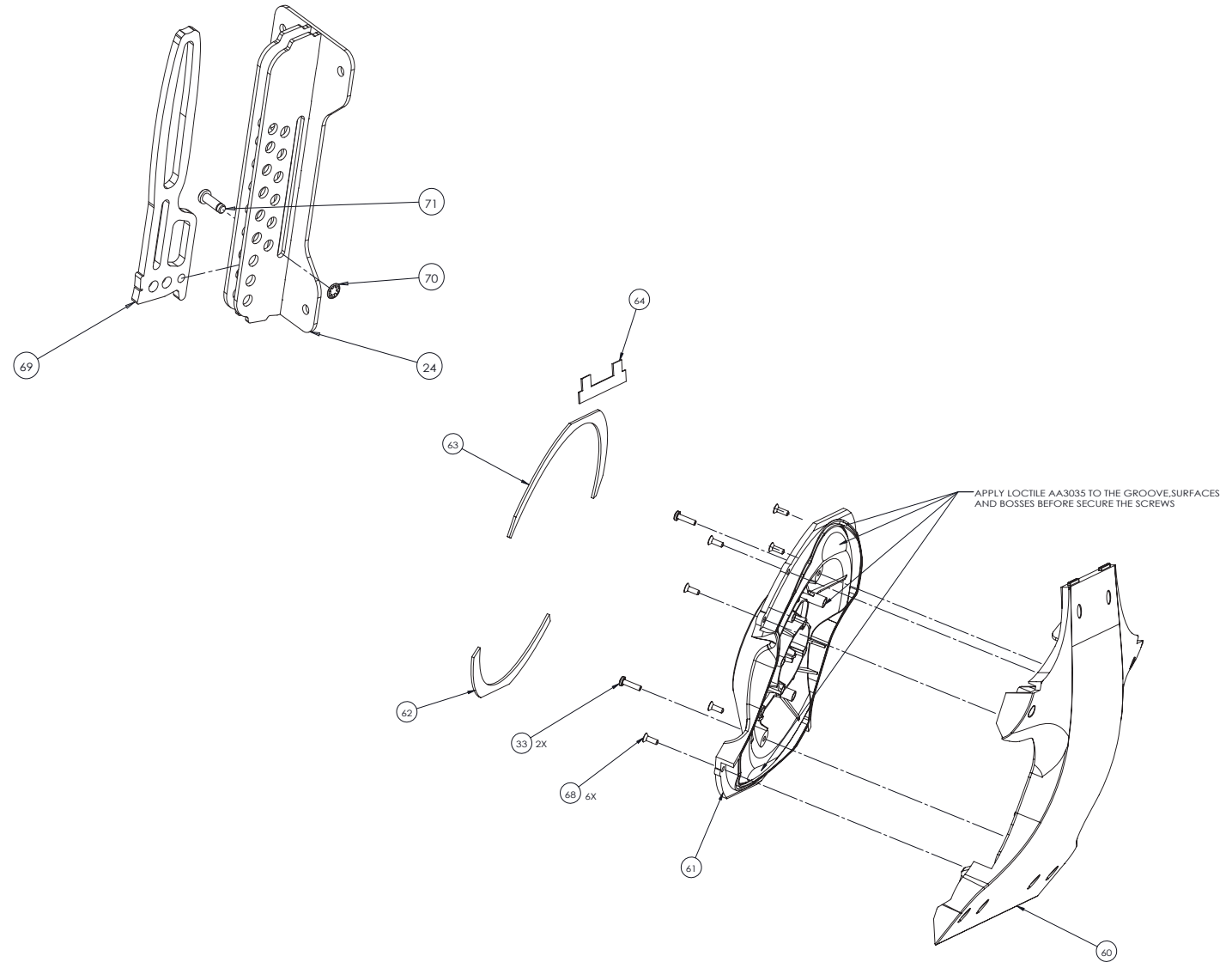
Ref ID	P/N	Description	QTY.
	JBL-P3234MX	SRX910LA	
	JBL-P3247MXCN	SRX910LA	
46	5134723-00	MECHASY,ENCL,LEFT PANEL UINT,SRX 910LA	1
47	5134724-00	MECHASY,ENCL,RIGHT PANEL UINT,SRX 910LA	1
2	5123868-00	HDW, BRKT,Side PNL,SRX 910LA	4
10	5120067-00X	M/I, 261G-1 FOR CS	2
-	5136328-00	CONE KIT, 261G-1	1
11	5126754-00	HDW,FOAM,WOOFER,SRX 910LA	4
13	5135888-00	SPKRSYS, GRL, ASY, w/Logo,SRX910LA	1
12	5056661	LOGO SRX800, EON615	1
15	5123832-00	HDW,RIG,FRONT UNIT,SRX 910LA	2
16	5126750-00	HDW, BRKT,rigging fix plate,SRX 910LA	2
17	5123053-00	MECHASY,AMP,SRX900,FULL RANGE	1
18	5123934-00	HDW,HDL,REAR HANDLE RIGHT,SRX 910LA	1
19	5123936-00	HDW,HDL,REAR HANDLE LEFT,SRX 910LA	1
20	5122183-00X	M/I, 2432H-3 FOR CS	1
-	365549-001	DIAPHRAGM, 2432H	1
-	D8R2432	DIAPHRAGM KIT 2432	1
21	5125861-00	HDW,BRKT,WG MOUNTING PLATE,SRX 906LA	1
24	5138192-00	HDW,ASY,RIG,Rear,SRX 910LA	1
-	5123064-00	HDW,CBL,WA,10LA SPEAKER WIRE HARNESS	1
43	5124223-00	HDW,SEAL,AMP PANEL GASKET,SRX 906LA	2
51	5123862-00	HDW, BRKT,rear rigging fix plate,SRX 910	2
-	05323416	CON,CBL,PowerCON TRUE1 TOP,FEMALE	1
-	05343418	CON,CBL,PowerCON TRUE1 TOP,MALE	1

# SRX910LA

## DUAL 10-INCH POWERED LINE ARRAY LOUDSPEAKER



- NOTES:  
1. TORQUE M4 SCREW TO 9.0 LBS-IN.  
2. ALL MACHINE SCREWS SHALL APPLY LOCTITE 243 BEFORE MOUNTING.



- NOTES:  
1. FIRST GLUE HORN PHASE PLUG AND HORN PANEL USE LOCTITE AA 3035.  
2. TORQUE M4 SCREW TO 10.0 LBS-IN.  
3. ALL MACHINE SCREWS SHALL APPLY LOCTITE 243 BEFORE MOUNTING.  
4. ALL OUTER APPEARANCE SURFACE SHOULD CLEAN THE GLUE OVERFLOW.